

Athol Charrette



***Redefining the
Rivers Edge***



September 28, 2002



Program Overview

- Goody, Clancy & Associates. Who are we?
- “Charrette?” What’s a charrette?

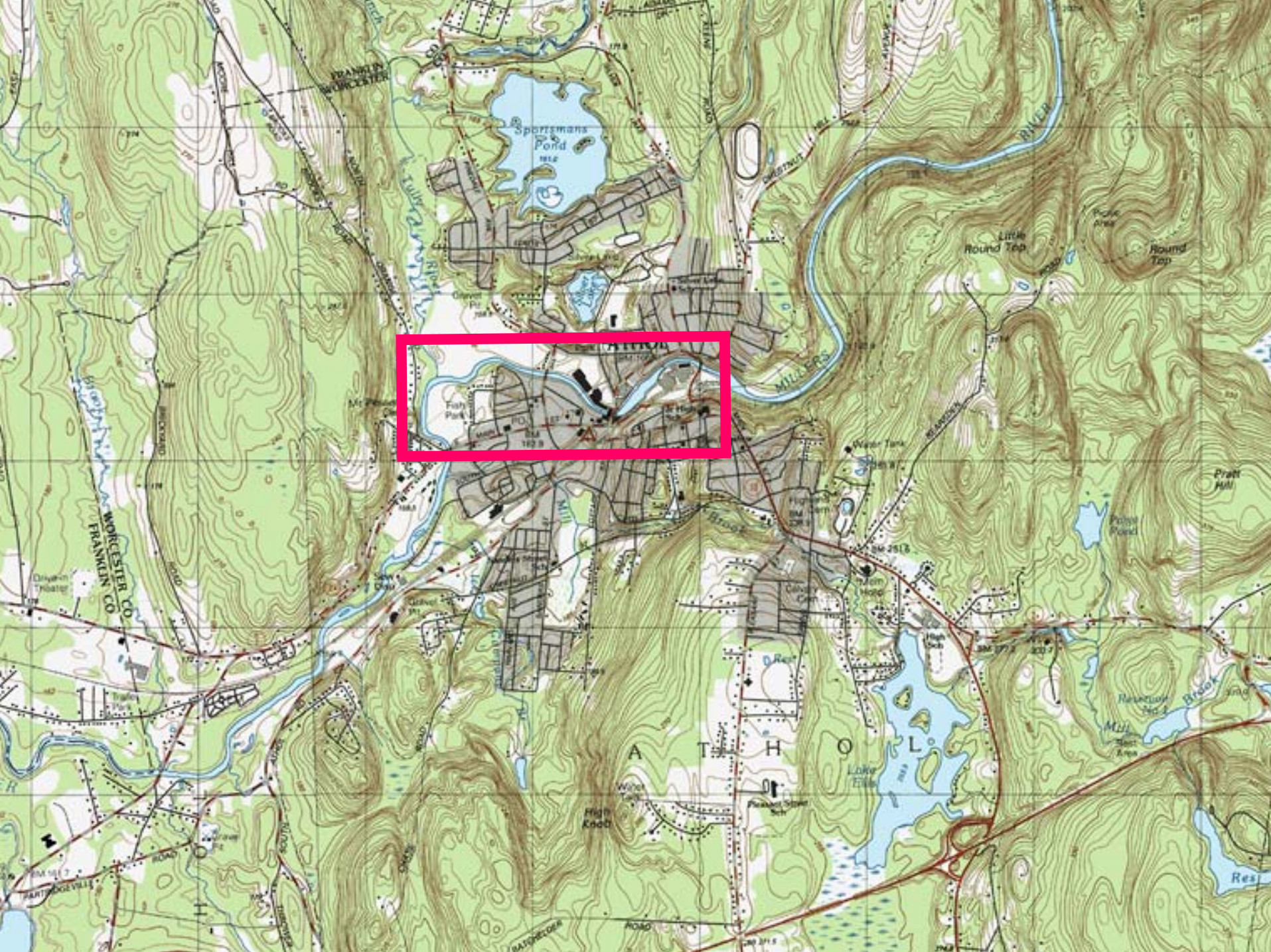
Athol Charrette



***Redefining the
Rivers Edge***



September 28, 2002







Three Themes

- Connections
land use, trails, overlooks, and parks
- Water
boating, fishing, swimming
- Economics
new life for old mills, festivals and events



ENTERING

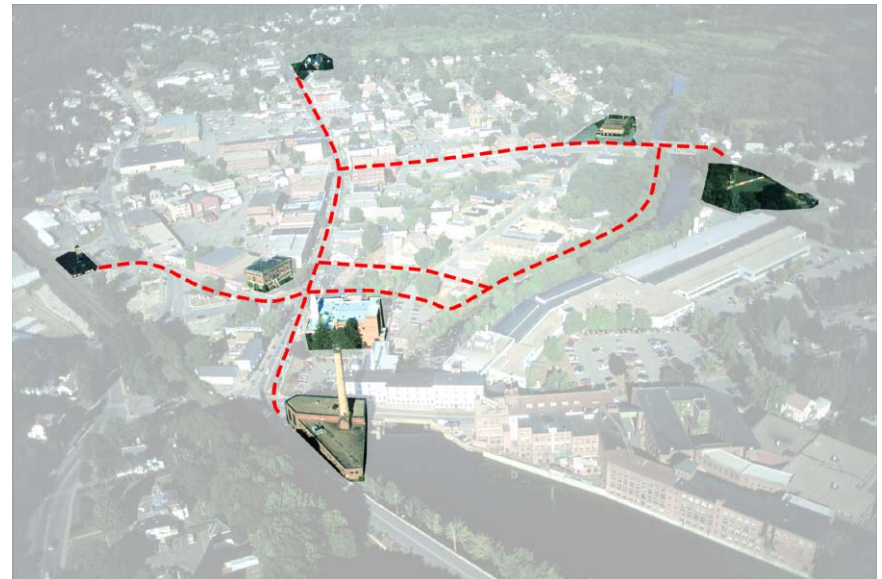
INC.



1762

ATHOL

Connections





Connections – questions

- How to connect downtown to the river?
Riverwalk? Festival space? Urban Park?
- How to connect downtown to the landscape?
Linked open spaces? Bridges? Greenway?
- How to enhance access for boating and fishing?
- How can better connections enhance mill reuse?









**STAGECOACH
STOP**

DURING THE YEARS
1790 TO 1853 THIS
CORNER WAS A BUSY
STOPPING PLACE FOR
STAGECOACHES FROM
DISTANT POINER.
BROOKS TAVERN
STOOD HERE AS THE
POPULAR HUB OF
FIVE STAGE ROADS

















River park?



River park?

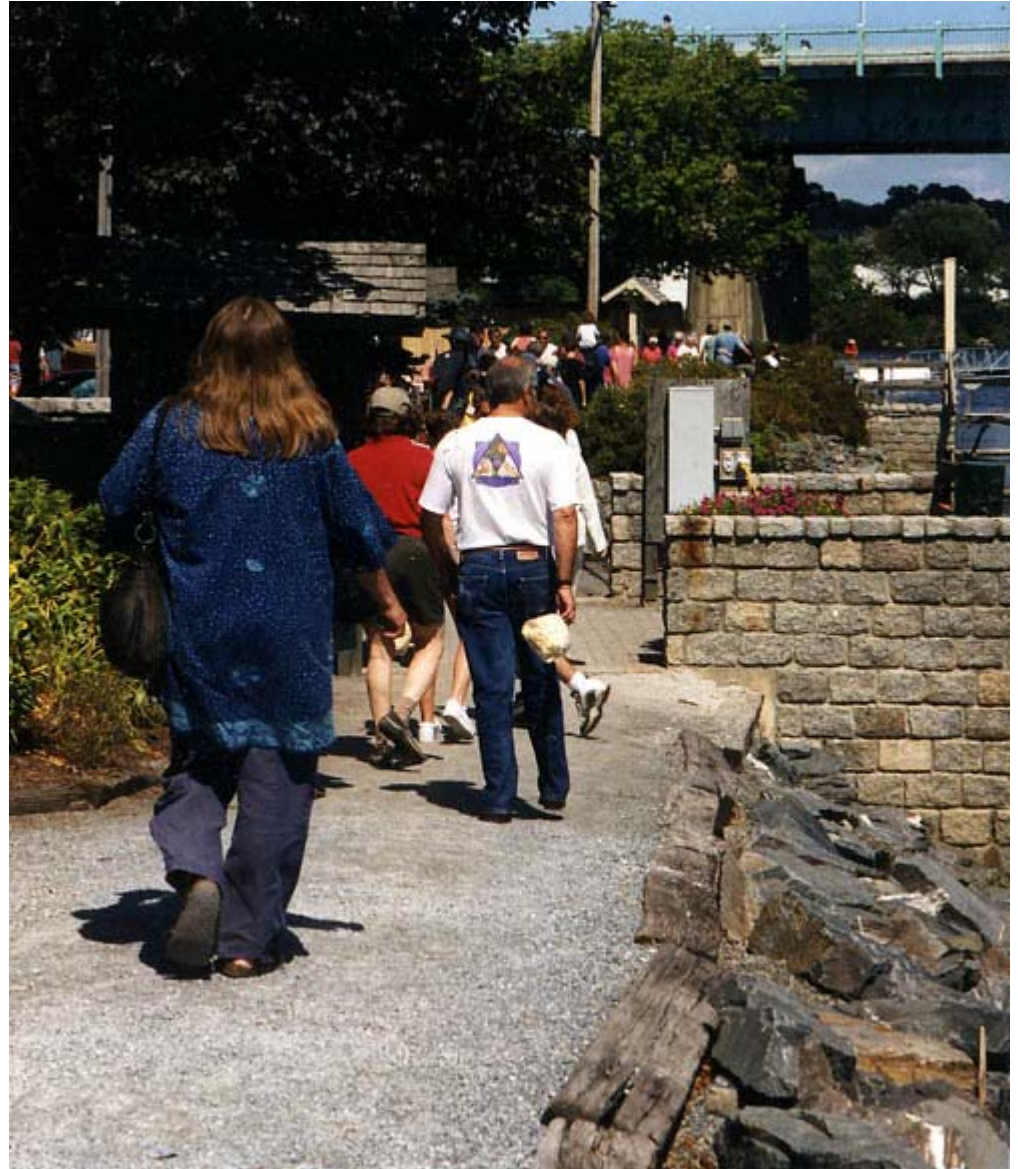


River park?





River Edges



River Edges







Play



Park cafes



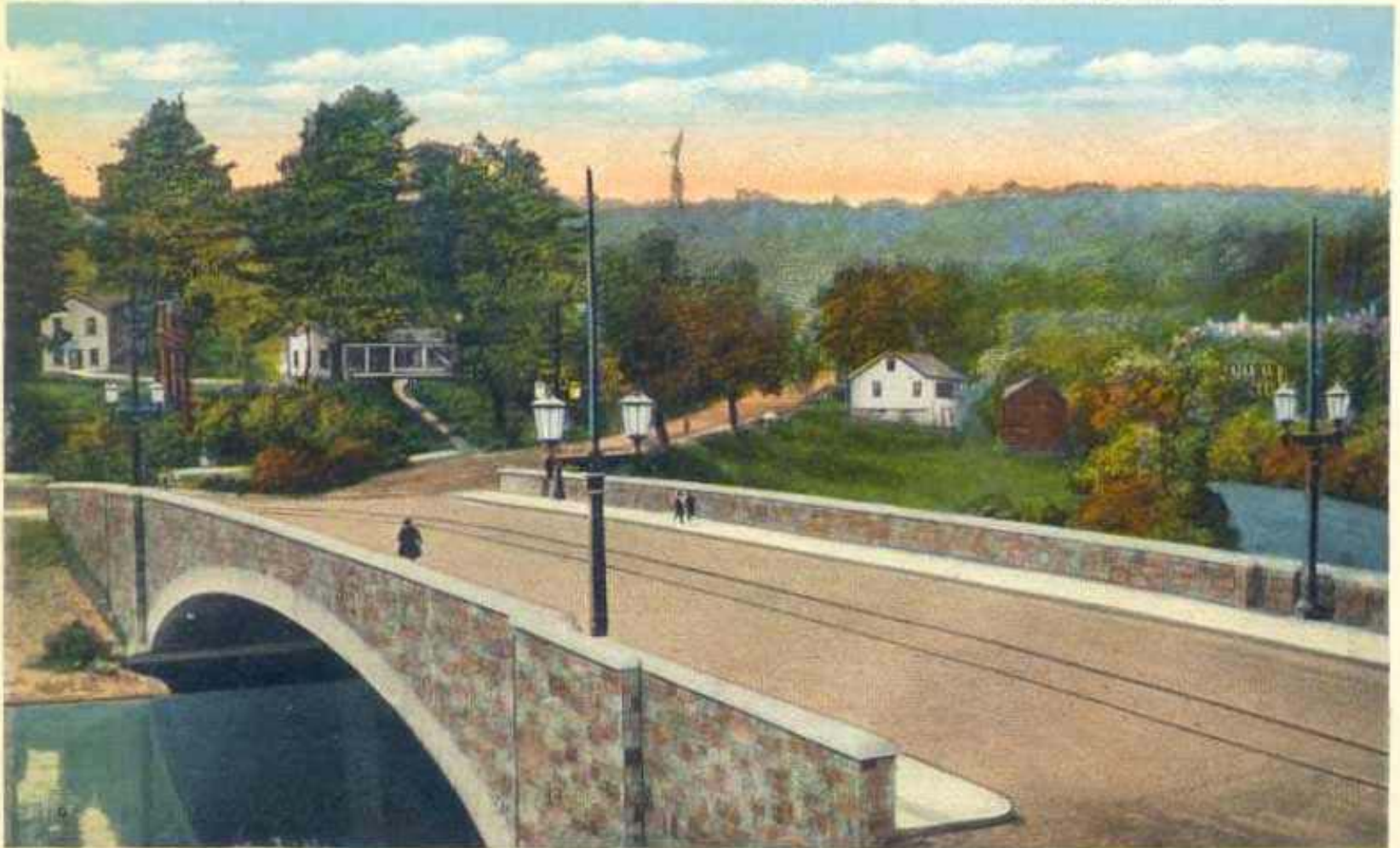


Boardwalks



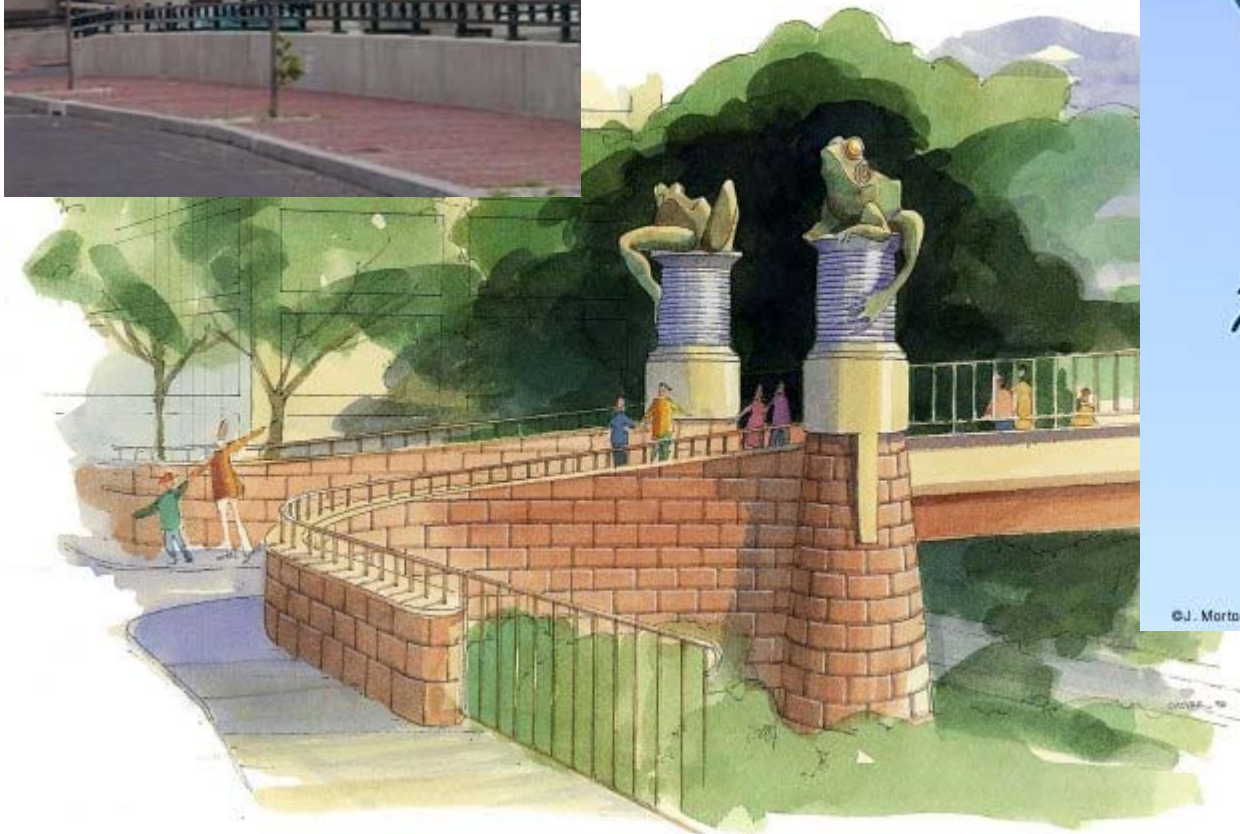
Main Street Bridge

New Arch Bridge, Main Street, Athol, Mass. 15



96034

Frog Bridge





Pedestrian Bridges

Pedestrian Bridges



Wayfinding



Signage



Signage



Water





Water – questions

- How should the river be used? *Boating?*
Fishing? Swimming?
- What are barriers to safe use of the river?
How can they be overcome?
- Who should own the riverbed and the land
along it?
- How can views to the river be opened and
maintained over years?



River Rat Race















Fishing

Fishing



Fishing





Canoe and kayak rentals



Boat Access



Boat Access



Piers and overlooks



Overlooks



Economics





Economics – questions

- What amenities along the river could contribute to downtown revitalization and mill reuse?
- Who will these amenities serve and benefit?
- What are the barriers to mill development and what kinds of incentives are needed to attract new economic activity?
- What mix of uses would work best in the mill buildings in the long run?

Starrett





Starrett



LP Athol



LP Athol





Empty building on
Exchange Street



ECONOMICS

*new uses for
old mill buildings*









ECONOMICS

festivals & events



Festivals





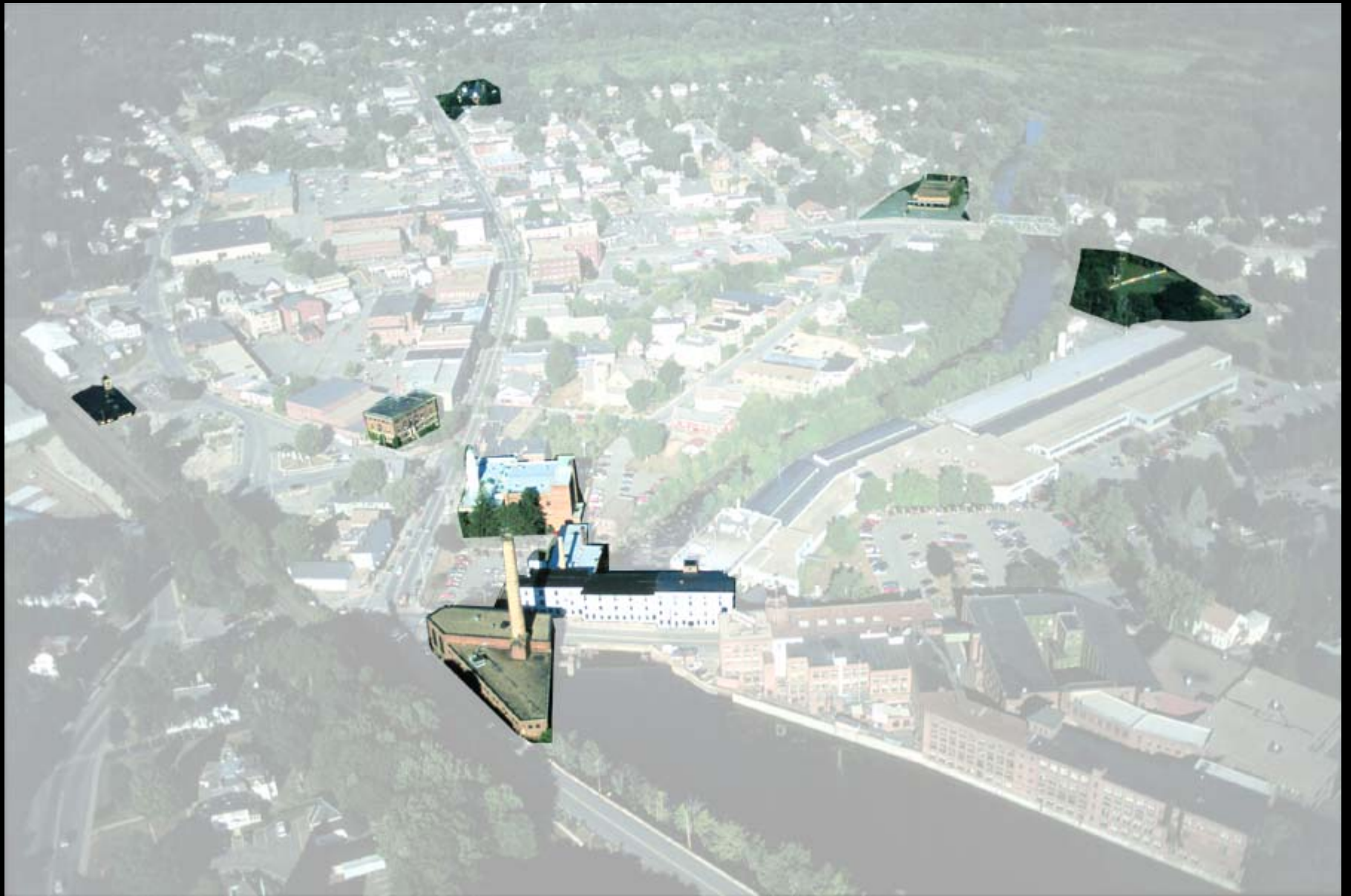
PASSPORT TO MEXICO 2002

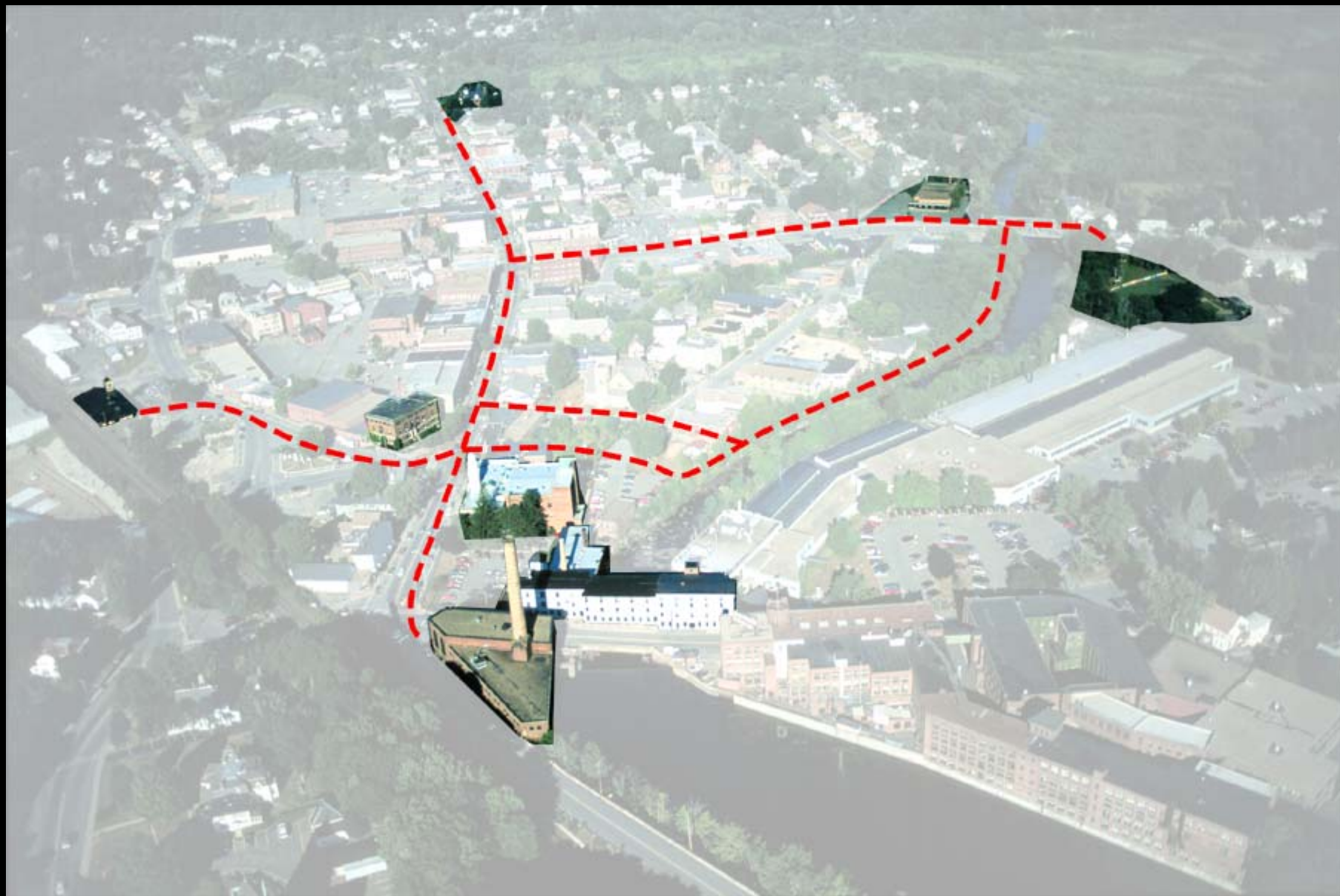




Imagine



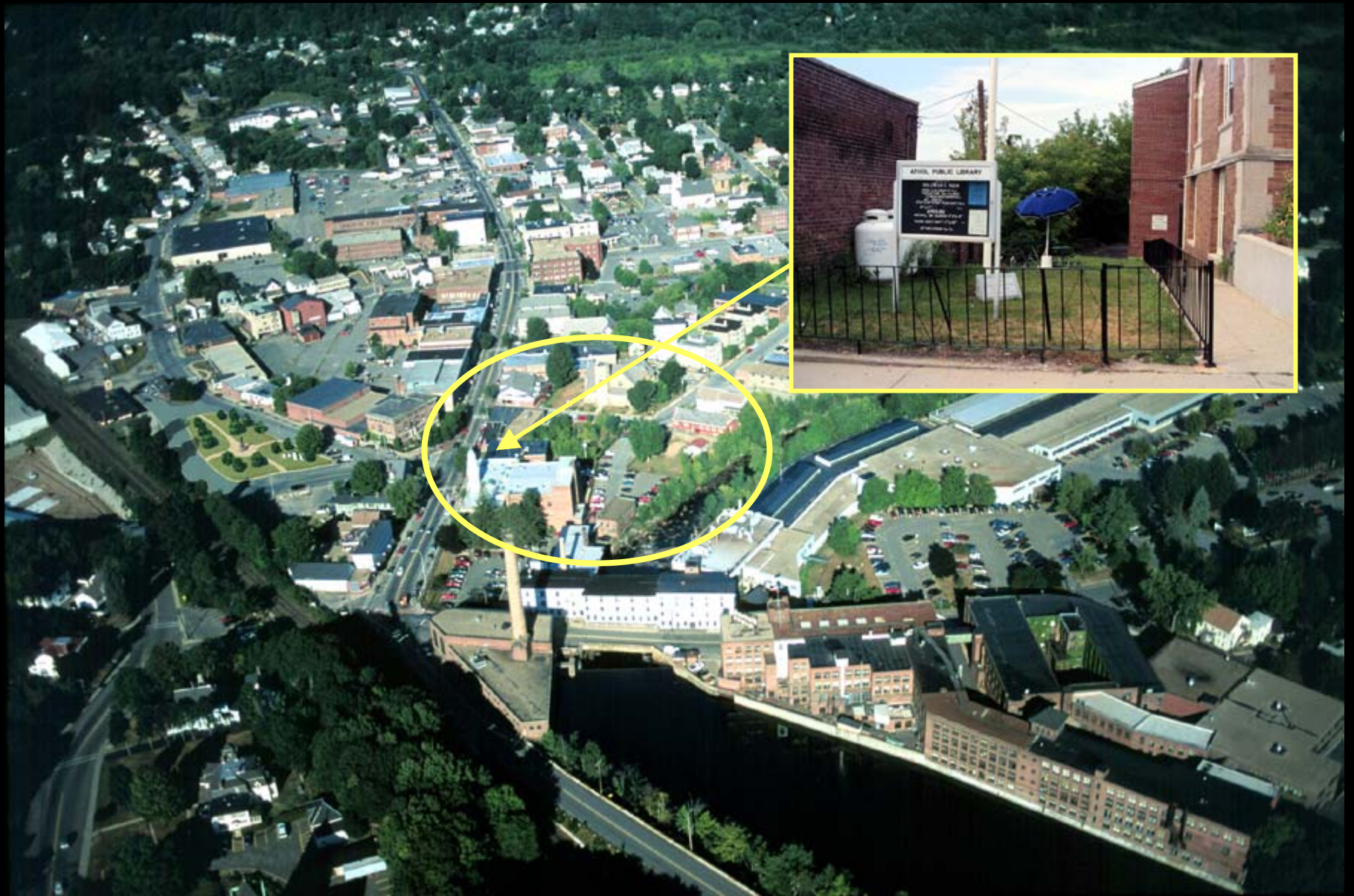












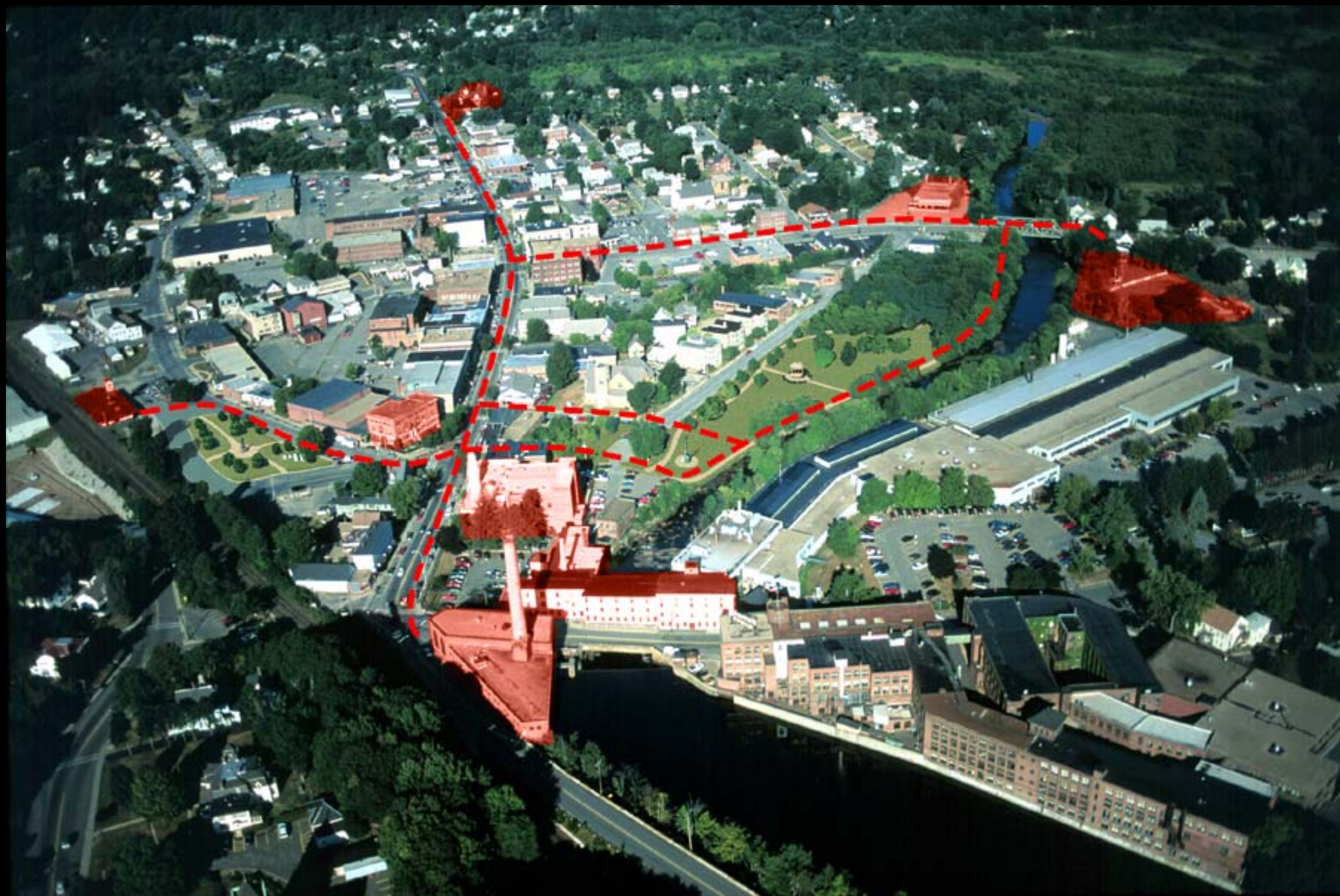














Focus Groups

Focus Groups (morning)

- Connections
David Spillane & Hope Fang
- River
Maria Van Dusen & Valerie Towe
- Economics
Wes Ewell & Jeff Shumaker





~ Break ~

Focus Groups



Focus Groups (afternoon)

- ① Group 1
David Spillane & Hope Fang
- ② Group 2
Maria Van Dusen & Valerie Towe
- ③ Group 3
Wes Ewell & Jeff Shumaker





~ Break ~



What Next?

- Charrette
September 28, 2002
- Presentation
October 2002
- Lessons Learned
December 2002
- Website
www.urbanrivervisions.org



~ Extra ~

destinations





destinations







Active Park Uses



Skateboard Park



BMX course - Germany



Sails in the Park, Sapporo



Art in the Park



Paolo Alto





