

Athol, MA
April 22, 2020
Public Listening Session



MVP in Your Community

- Athol awarded \$53,000 from Executive Office of Energy and Environmental Affairs (EEA)
- Funds have been put towards achieving MVP Climate Community Designation
- Establishes eligibility and competitiveness for future grants that can be used to enhance the resiliency of the community to climate change
- Hazard Mitigation Planning
- Climate Justice – Equitable Adaptation Working Group

BUILDING CLIMATE RESILIENCE IN THE COMMONWEALTH

CLIMATE MITIGATION (GWSA & Green Communities)

- › Energy conservation & efficiency
- › Increased renewables in electric grid
- › Onsite renewable energy
- › Sustainable transportation / improved fuel efficiency
- › Capture and use of landfill and digester gas
- › Carbon sinks

CLIMATE ADAPTATION (EO 569 & MVP)

- Utilizing climate projections in planning and design
- › Water/energy conservation
 - › Microgrids
 - › Strategic electrification
 - › Storage for peak demand response
 - › Resilience hubs
 - › Risk & vulnerability assessments
 - › Structure retrofit/relocation
 - › Culvert upgrades
 - › Dam removal
 - › Adaptive resource management
 - › Land acquisition

HAZARD MITIGATION (SHMCAP, MEMA/FEMA)

- › Dry floodproofing
- › Dam rehabilitation
- › Slope stabilization
- › Removal or reduction of flammable vegetation
- › Generators for critical facilities

CROSS-CUTTING STRATEGIES:

- › Smart Growth
- › Community Outreach, Engagement and Education
- › Building Code Updates (including development, enforcement, and public education)
- › Green infrastructure
- › Evaluating adoption and/or implementation of bylaws/ordinances that reduce risk and increase resilience

**BERKSHIRES
& HILLTOWNS**

**GREATER CT
RIVER VALLEY**

CENTRAL

NORTHEAST

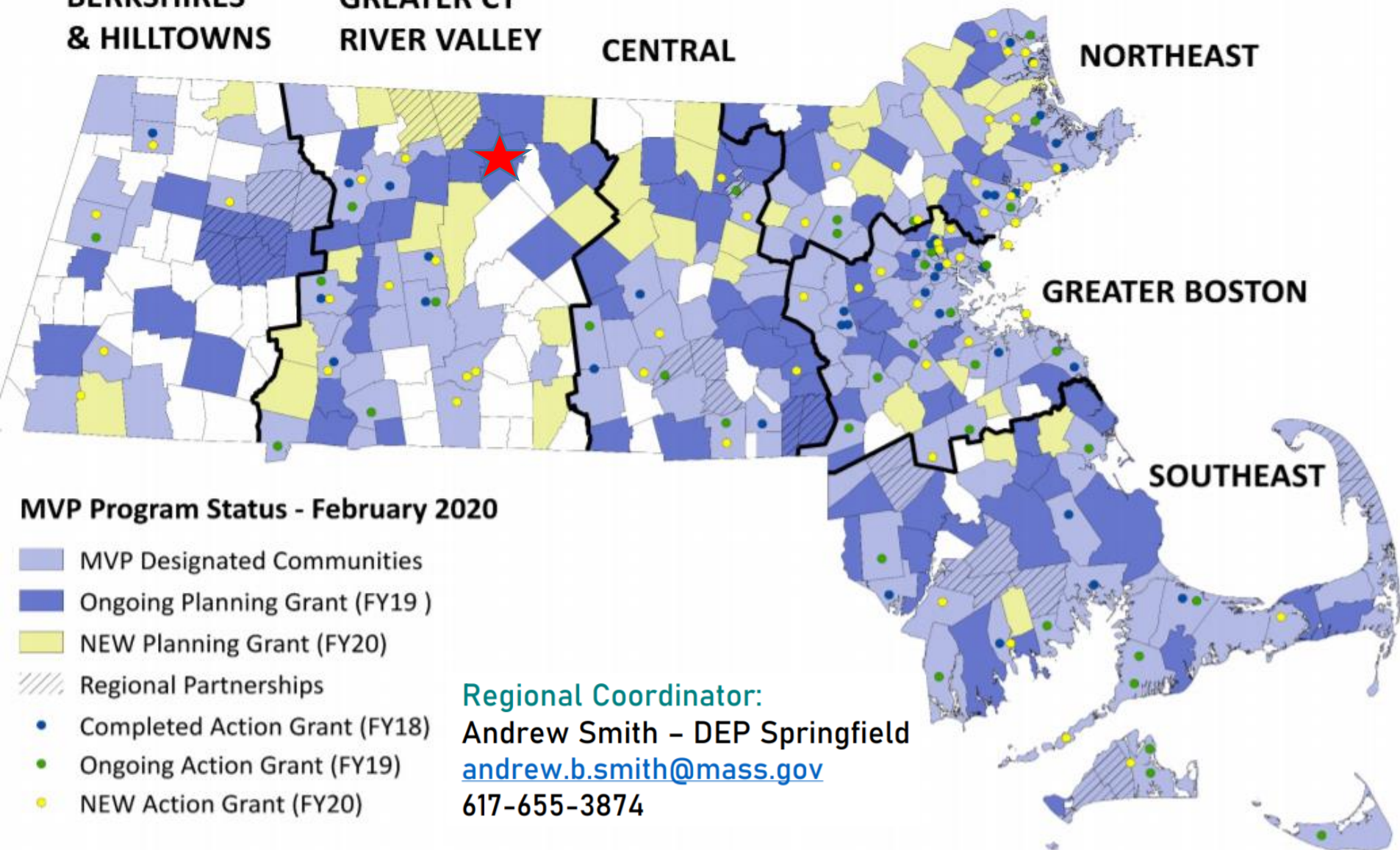
GREATER BOSTON

SOUTHEAST

MVP Program Status - February 2020

-  MVP Designated Communities
-  Ongoing Planning Grant (FY19)
-  NEW Planning Grant (FY20)
-  Regional Partnerships
-  Completed Action Grant (FY18)
-  Ongoing Action Grant (FY19)
-  NEW Action Grant (FY20)

Regional Coordinator:
Andrew Smith – DEP Springfield
andrew.b.smith@mass.gov
617-655-3874



Outcomes of this Process

- MVP Community Designation
- Funding Mechanism
- Grant Eligibility and Competitiveness
- Public Education and Awareness
- Baseline Planning Report
- Climate Resilience
- Climate Justice
- Hazard Mitigation Plan Update



Why is this Important for your Community?

- Climate change gradually changes the distribution of risk
- Climate change challenges the ways that community resources are managed

What Have We Been Up To?

- Core Team Risk Assessments
- Hazard Mitigation Planning
- Equitable Adaptation Working Group
- Community Resilience Building Workshop

MVP Designation!



Coordination of Regional Planning Entities

Features	Location	Ownership	Vors	Flooding	Extreme Temp (heat/cold)	Wind/ Microbursts	Extreme Snow/Ice	PRIORITY	TIME
								11-30 L	Short Long Ongoing
Infrastructure									
Parks (and other open spaces)	East-ville	City	S		Impact: Biking, local, etc.			M	L/O
Municipal + Public Buildings + Group Quarters	East-ville	City	V/S		Impact: Biking, local, etc.			M	S
Police Station in Floodplain	East-ville	City	V/S		Impact: Biking, local, etc.			L	O
Communications Infrastructure	East-ville	City	S/V		Impact: Biking, local, etc.			M	O
Drains + Bridges	East-ville	City	V		Impact: Biking, local, etc.			H	L
Artificially Altered Wetlands	East-ville	City	V		Impact: Biking, local, etc.			H	O
Social									
Emergency Communication System	East-ville	City	S/V		Impact: Biking, local, etc.			H	O
Low- Income Populations + Disasters	East-ville	City	V		Impact: Biking, local, etc.			H	L/O
Transportation	East-ville	City	V		Impact: Biking, local, etc.			H	S
Vacant + Abandoned Properties	East-ville	City	S		Impact: Biking, local, etc.			M	O
Community Organizations + Disasters	East-ville	City	S		Impact: Biking, local, etc.			O	O
Aging Housing (Low-income)	East-ville	City	S		Impact: Biking, local, etc.			H	O
Environmental									
Silver Lake / Lake Ellis	East-ville	City	V/S		Impact: Biking, local, etc.			H	L
River (upstream treatment)	East-ville	City	V		Impact: Biking, local, etc.			H	O
Paved / Impervious Surfaces	East-ville	City	V		Impact: Biking, local, etc.			H	O
Tully Lake	East-ville	City	S/V		Impact: Biking, local, etc.				
Protected Areas - Wetlands	East-ville	City	S/V		Impact: Biking, local, etc.				
coastal - Bone Disease	East-ville	City	V		Impact: Biking, local, etc.			M	O

MVP CORE TEAM WORKING GROUP

Eric R. Smith, Planning Department
Joseph Guarnera, Athol Fire Chief
Craig Lundgren, Athol Police Chief
Doug Walsh, Athol Public Works, Superintendent
David Small, Athol Planning and Community Development
Deb Vondall, Athol Board of Health
Sarah Wells, Mount Grace Land Conservation Trust
Bob Legare, Athol Building Inspector
Jeff Parker, Athol Fire Department
Bob Muzzy, Athol Conservation Commission
Brian Hall, Athol Open Space
Ivan Ussach, Millers River Watershed Council
Heather Bialecki-Canning, North Quabbin Community Coalition
Max Feldman, Mount Grace Land Conservation Trust
Shaun Suhoski, Athol Town Manager
Dick Kilhart, Athol Department of Public Works
Heidi Strickland, Resident

CORE TEAM MEETING DATES	TOPICS
October 2, 2019	MVP Kickoff Meeting
November 6, 2019	Community Resilience Building Hazard Mitigation Planning Equitable Adaptation Working Group
December 4, 2019	Community Resilience Building Hazard Mitigation Planning Equitable Adaptation Working Group
February 4, 2020	Community Resilience Building Workshop
March 4, 2020	Public Listening Session #1 - Integrated MVP/HMP Planning
April 22, 2020 (Online)	Public Listening Session #2

H-M-L priority for action over the Short or Long term (and Ungoing)
V = Vulnerability S = Strength

Top Priority Hazards (tornado, floods, wildfire, hurricanes, earthquake, drought, sea level rise, heat wave, etc.)

[illegible]

Climate Change in Athol



Extreme Temps (heat/cold)



Flooding



Wind/Microbursts



Extreme Snow and Ice

Categorizing Community Strengths and Vulnerabilities

- Infrastructural Features
- Societal Features
- Environmental Features



Opportunities for Co-Benefits



Social Vulnerability

- Environmental Justice Populations
- Socially Vulnerable Populations
- Elderly Residents
- Teens and Transition Age Youth
- Morton Meadows
- Food Insecurity
- Reliable Transportation
- Low-Income Residents
- Social Isolation
- Housing Insecurity



SENIORS



STUDENTS



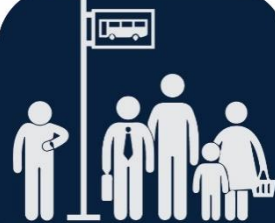
BUILD SOCIAL
RESILIENCE



COOLING CENTERS



CHILDREN



PUBLIC TRANSIT USERS

Millers River and Downtown Athol

- Flood Mitigation
- Urban Heat Island Effect
- Green Infrastructure
- Economic Development
- Community Open Space
- Public Shade Trees
- River Access
- Green Jobs
- Lord Pond Plaza
- Morton Meadows
- Walkable Downtown
- Regulatory Implementation
- Stormwater Quality
- Greenway



Emergency Management and Preparedness

- Community Outreach
- Community Networks
- Community Education
- Public Safety Campaign
- Regional Coordination
- Coordination w/ State Agencies
- Municipal Communication Networks
- Police Station
- Emergency Shelters/Assembly Areas
- Public TV/Radio



SENIORS



STUDENTS



BUILD SOCIAL
RESILIENCE



COOLING CENTERS



CHILDREN



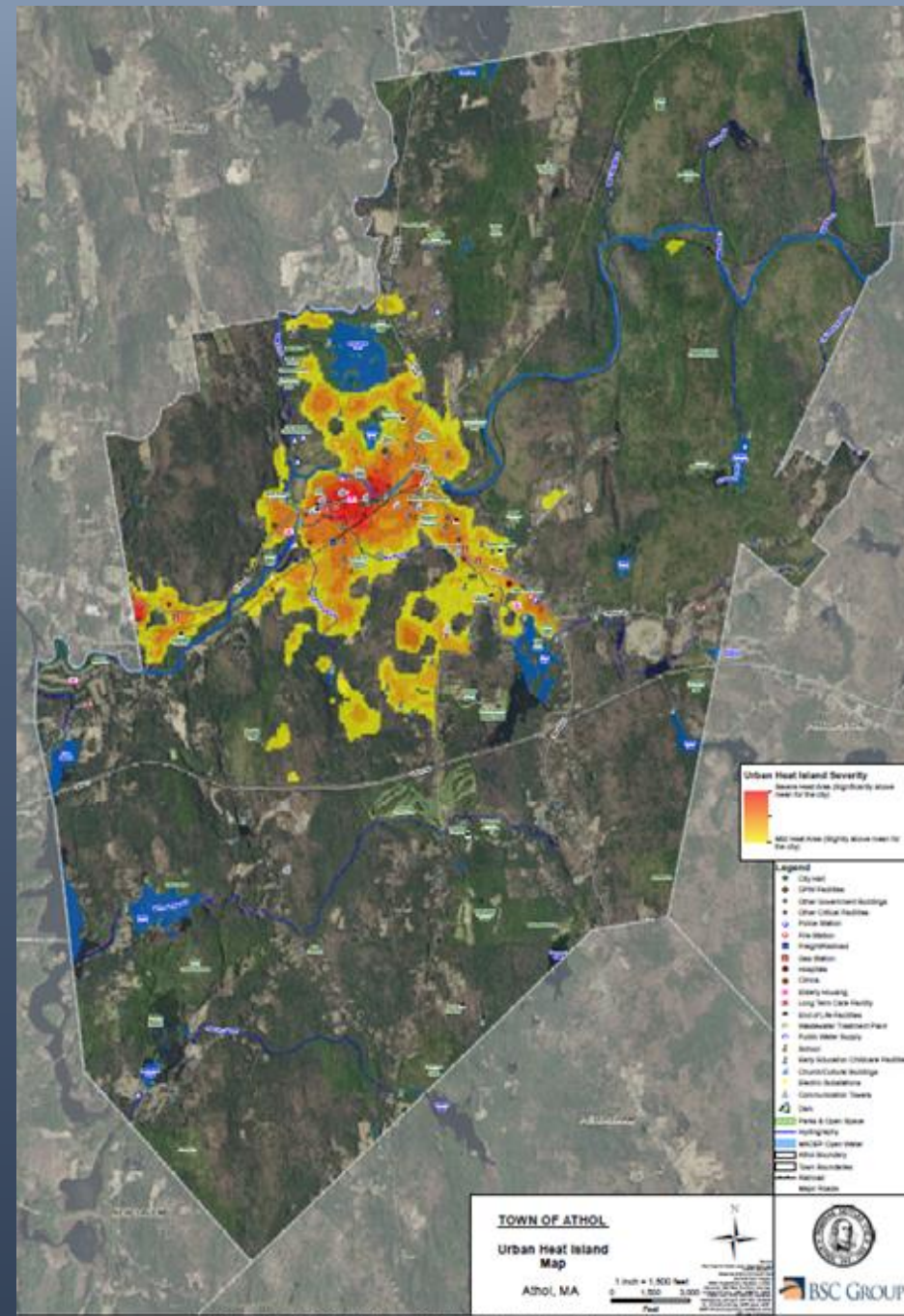
EDUCATION/ENGAGEMENT
INITIATIVE

Green Infrastructure/Nature Based Solutions

- Flood Mitigation
- Urban Heat Island Mitigation
- Millers River
- Water Quality
- Impervious Surface
- Silver Lake
- Lake Ellis
- Green Infrastructure
- Public Shade Trees
- Downtown Open Space
- Splash Park



Urban Heat Island Effect and Flood Mitigation



Project Examples

Top Resilience Actions from CRB Workshop

- Lord Pond Plaza
- Implement “AHA” 2020 Athol Helping Athol: Community Plan for Social Resilience
- Green Jobs Program, Downtown Nature Based Solutions, Urban Heat Island Mitigation
- Community Networks, Engagement, Education
- Aging Housing Stock, Renewable Energy
- Recreational Open Space, Athol Lakes Water Quality

Thank You

- Eric Smith, Athol Planning Department
- Core Team Members
- Workshop Participants
- Heather Bialecki-Canning, North Quabbin Community Coalition

Stay Engaged!

Please take our Community Feedback Survey available on the Town
Website Available through 5/8/2020

Athol Planning Department – MVP Webpage

<https://www.athol-ma.gov/dept-of-planning-and-development/news/municipal-vulnerability-preparedness-mvp-draft-plan-status-and>

Athol Planning Department

<https://www.athol-ma.gov/dept-of-planning-and-development>

Athol Town Website

<https://www.athol-ma.gov/>